



Model: AT-7000  
USER' S MANUAL  
***Digital Display Alcohol  
Concentration Test Meter***



---

# CATALOGUE

<b>Precautions</b>	<b>02</b>
<b>Preparation before using</b>	<b>03</b>
<b>Components diagram</b>	<b>04</b>
<b>Installing battery</b>	<b>04</b>
<b>How to use the alcohol tester</b>	<b>05</b>
<b>Test</b>	<b>06</b>
<b>Auto power off</b>	<b>07</b>
<b>Restart mode</b>	<b>07</b>
<b>Set unit result display format</b>	<b>08</b>
<b>Set alert level</b>	<b>09</b>
<b>Rec record checking mode</b>	<b>09</b>
<b>Declaration</b>	<b>10</b>
<b>Common faults and</b>	<b>10</b>
<b>Different country alcohol units</b>	<b>11</b>
<b>Maintenance</b>	<b>12</b>
<b>Performance parameter</b>	<b>12</b>

## Precautions

- Thank you for selecting and purchasing digital display alcohol concentration test meter. Please read this manual carefully to ensure that you can use the product correctly.
- This device is a healthcare product; it is intended to control overdrink of alcohol so as to keep you fit, through testing the alcohol in your breath and calculating the content of alcohol in the blood via microcomputer. The product is applicable to family healthcare as well as for reference in determining whether the driver is driving after drinking.
- The test result may be affected by a number of aspects such as environmental temperature, various gases in the air and smoking, etc. the result shall, therefore, be only for reference and shall not be regarded as the justification of driving after drinking.
- No matter whether you have consumed this product, its manufacturer and appropriate agents shall be not responsible for any traffic accident arisen due to ethanol or other accidents happened under the related regulations and rules.
- As people's breath contains some fermentable gases (from stomach and intestines), so some gases may even be tested out under no drink circumstance.
- When after drinking, it is recommended to last after 20 minutes, it is because 20 minutes is approximately for alcohol to be absorbed into blood from the digestive organs, and residual alcohol remaining in the mouth takes this long to dissipate.
- For accurate result, do not repeat neat testing with in 3 minutes after time.
- Do not somke and eat for 20 minutes prior testing.
- Do not use any excitant substances near the tester, such as paing, insecticedes, alcohols.
- If the device has been performed for five times successively, please stop for two minutes and then use it again.
- Do not drive after drinking!

## OPERATION



BAC	Dose-Specific Effects <sup>1</sup>
0.020-0.039% <sup>2</sup>	Generally no loss of coordination. Slight joy or loss of shyness. Depressant effects are not clear.
0.040-0.069%	General feelings of well-being, relaxation, shyness is reduced and sensation of warmth. Joy. Some minor impairment of reasoning and memory. Lowering of caution. Driving skills may be impaired.
0.070-0.099%	Slight impairment of balance, speech, vision, reaction time, and hearing. Joy. Judgment and self-control are reduced. Caution, reason and memory are impaired. Driving skills are always impaired.
0.100-0.129%	Major impairment of motor coordination and loss of good judgment. Speech may be slurred. Balance, vision, reaction time and hearing will be impaired. Joy.
0.130-0.159%	Gross motor impairment and lack of physical control. Blurred vision and major loss of balance. Joy reduced and state of feeling unwell begins to appear.
0.160-0.190%	Anxiety, restlessness predominates. Nausea may appear. Appearance of a "sloppy drunk."

## Preparation before using

●After opening the package, please check the parts and components below. If any one is absent, please contact its dealer.

●Accessories

1. One digital display alcohol concentration detector.
2. One User Manual.
3. Three AAA alkaline batteries. (not included).
4. 5 air-blowing pipes.
5. One sling.

## PACKAGE CONTENTS



x1



x5

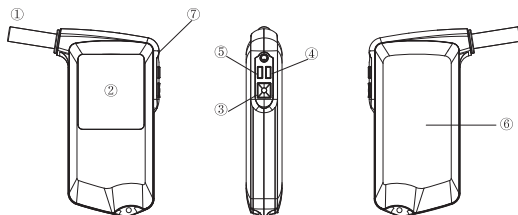


x1



x1

## COMPONENTS DIAGRAM



① Mouthpiece(replaceable)

② Lcd screen

③ Power

④ Right button(k1)

⑤ Left button(k2)

⑥ Battery compartment

⑦ Vent hole

## Installing Battery

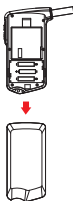
●1.Open the back cover

2.Install three 1.5V AAA alkaline batteries or two batteries with same specification into the battery case in a right way (as shown in figure 1) per the mark "+" and "-" on the case, and then close the cover well (as shown in figure 2)

3.Install the back cover

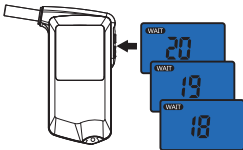
●Battery Replacement

If the Battery symbol on the LCD flashes, it indicates the battery electricity is not enough and the batteries need to be replaced, in order to ensure the test accuracy. Open the battery cover and take out the batteries, and reinstall the new batteries with same specification (as shown in figure ). Make sure to keep the old batteries out of children's reach, please dispose the useless batteries according to the local regulations.




## How to use the alcohol tester

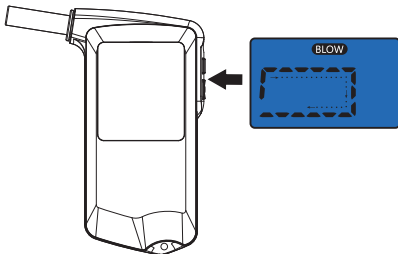
- Operational Procedure:
- Wait
- Press the power button about 2 seconds, the alcohol tester LCD will tun on with one beep sound.



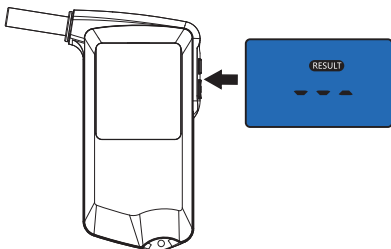
- The: "WAIT" symbol is displayed and the 20 to 0 countdown is started that indicate the tester is in wark up mode.
- NOTE
- If first wark up is defeated, the tester will be reset automatically and wark up again for 1-2 times.
- It always has a large number of gas & impurity adsorbed on the surface of alcohol sensor, when first time taking out the tester from the packaging , or after long time no using for the tester, it need more time for cleaning and wark up the alcohol sensor, you should repress the power button and retry several times If possible.

## Test

- The "BLOW" symbolis displayed when wark-up is succeed, and the  countdown is started that indicate the tester is in testing mode.



- Near and blow into the breath inhalefor 3-5 seconds.
- The analysis of...





●Read the tester result from the alcohol tester lcd.



Caution  $\leq 0.200$  %BAC



$0.210$  %BAC  $\leq$  Caution  $\leq 0.490$  %BAC



Danger  $\geq 0.500$  %BAC

●Unit conversion



### Auto power off

- 1.After the result be display for about 10 seconds, the "off" symbol will appear 2 seconds and the alcohol tester be turned off.
- 2.If wark up is defeated, the tester will automatically turned off.
- 3.Long press the POWER button to turn on the product and long press it again to turn off in any mode.

### Restart mode

After displaying the testing result, click POWER button to re-activate the TESTING mode directly, no need to wait till it shut off to click the POWER button.

## Set unit result display format

### Explanation for the 6 kinds of units in the sheet.

value	Meaning
0	%BAC
1	‰BAC
2	Mg/L
3	g /l
4	Mg/100ml
5	‰Prom

### Setting method

1. In the TESTING mode after turn on the product, long press right button (K1) within the 4 seconds of displaying "WAIT", so as to go into the POINTSETTING mode. Please check the following picture.
2. Then click the left button and Right button (K2) (K1) to select the unit you need, after set up the unit, long press right button of K1 to quit the UNIT SETTING mode and return back to TESTING mode.
3. If there is no any operation within 15 seconds it will show "OFF" to shut off the product.



## Setalert level

### ●Setting method

1. Double click the POWER button in UNIT SETTING mode to go into CAUTION setting mode, as shown the following picture.
2. Set up CAUTION first, then click left button (K1) and right button (K2) to set up CAUTION data.
3. After set up the CAUTION data, single click POWER button to switch to DANGER setting, then click the left and right button of K1 K2 to set up the CAUTION data.
4. After finish setting, double click POWER button to quit the CAUTION mode, and return back to UNIT SETTING mode.



Caution  $\leq 0.200$  %BAC



$0.210$  %BAC  $\leq$  Caution  $\leq 0.490$  %BAC



Danger  $\geq 0.500$  %BAC

## REC record checking mode

1. Within the TESTING mode time, double click POWER button to get into the REC record checking mode, click the left and right button of K1K2 to check the 1-32 times TESTING record.
2. In REC mode, double click POWER button to quit the checking mode and return back to TESTING mode.
3. If there is no any operation within 15 seconds it will show "OFF" to shut off the product.



## Declaration

1.Regardless of whether the product is used,manufacturers and vendors will not bear any responsibility for the violations.for example:drunk driving and high-altitude operations driving.

2.Each person reacts differently to alcohol,so the test results are for reference only, which cannot serve as the criteria in determining the otucone.

## Common Faults and Solutions

Faults	Possible Faults Reason	Solution
Power on failing	Put batteries incorrectly	Installing batteries in correct polarity
	Very low power batteries	Replacing the new alkaline batteries
	Circuit Fault	Contacting after-sale service
Blowing no response	Warm up not completing	Warm up for more times
	Circuit Fault	Contacting after-sale service
Blowing no result	Residual Gas in tester	Warm up again
	Not blowing in schedule time	Blowing during "BLOW" countdown time
No blowing with test result	Residual gas in tester	"Warm up" for more times
Different result after several testing	Testing as soon as drinking	Testing after 20 minutes of drinking
	Blowing time different	Deep breath for 3-5 seconds

## Different country alcohol units

No.	BAC (Blood Alcohol Concentration)				BrAC (Breath Alcohol Concentration)	
	%	‰	g/l	mg/100ml	mg/l	ppm
1	0.01	0.1	0.1	10	0.05	25
<b>2</b>	<b>0.02</b>	<b>0.2</b>	<b>0.2</b>	<b>20</b>	<b>0.10</b>	<b>50</b>
3	0.03	0.3	0.3	30	0.15	75
4	0.04	0.4	0.4	40	0.20	100
<b>5</b>	<b>0.05</b>	<b>0.5</b>	<b>0.5</b>	<b>50</b>	<b>0.25</b>	<b>125</b>
6	0.06	0.6	0.6	60	0.30	150
7	0.07	0.7	0.7	70	0.35	175
<b>8</b>	<b>0.08</b>	<b>0.8</b>	<b>0.8</b>	<b>80</b>	<b>0.40</b>	<b>200</b>
9	0.09	0.9	0.9	90	0.45	225
10	0.10	1.0	1.0	100	0.50	250
11	0.11	1.1	1.1	110	0.55	275
12	0.12	1.2	1.2	120	0.60	300
13	0.13	1.3	1.3	130	0.65	325
14	0.14	1.4	1.4	140	0.70	350
15	0.15	1.5	1.5	150	0.75	375
16	0.16	1.6	1.6	160	0.80	400
17	0.17	1.7	1.7	170	0.85	425
18	0.18	1.8	1.8	180	0.90	450
19	0.19	1.9	1.9	190	0.95	475
20	0.20	2.0	2.0	200	1.00	500

Common units: %BAC—USA  
 g/l—European  
 mg/L BRAC—Japan  
 mg/100ml—China  
 ‰BAC—Russia  
 ‰prom—poland

## Maintenance

- Do not use these cleansers such as benzene, thinner or petrol to clean the product to avoid damaging its surface.
- Do not fall it down or strike, otherwise malfunction may be caused.
- Do not try to repair, rebuild or dismantle any parts except for the battery replacement.
- When not use the device for a long time, you are recommended to take out the batteries to prevent the damage due to battery leakage.

## Performance Parameter

- Measure range:
  - 0.000-0.190%BAC;
  - 0.000-1.90‰BAC;
  - 0.000-1.90g/l;
  - 0.000-0.950mg/l
  - 0-190 mg/100ml
  - 0.000-1.90‰Prom
- Alarming Level: 0.05%BAC; 0.5‰BAC; 0.5g/l; 0.25mg/l 50mg/100ml 0.5‰Prom
- Accuracy:  $\pm 0.01\%$ BAC;  $\pm 0.1\%$ BAC;  $\pm 0.05$  mg/l
- Figure size: Length 125mm
- Width 65mm
- Height 25mm
- weight: 45g
- Battery: 3×1.5V(AA A battery)
- blowing Time; 5s
- Display: LCD Display with backlight
- Current consumption: working current $\leq 180$ mA
- Quiescent Current $\leq 40\mu$ A
- Environmental temperature:  $-10^{\circ}\text{C}\sim 50^{\circ}\text{C}$
- Environmental humidity:  $\leq 95\%$  NO Dews
- Battery expectancy time: $\geq 300$



CE RoHS FC    MADE IN CHINA