

User Manual

Digital Display Alcohol Breathalyzer



Website: <http://rofeer.cn>
Email: rofeer@hotmail.com

CATALOGUE

Statement.....	01
Note 1.....	01
Packing List.....	01
Product Structure.....	02
Using Method.....	02
• Alcohol Testing.....	02
• Temperature Unit Setting.....	04
• Testing Unit Setting.....	04
• Alarm Triggering Value (Warning/Dangerous Value) Setting.....	05
• Default Value of Triggering Alarm.....	06
• Restart Mode.....	06
• Memory Mode.....	07
• Automatic Power Off.....	07
• Low Battery Indication.....	07
Specifications.....	08
• Basic Specification.....	08
• Testing Range.....	08
• Testing Unit Meaning.....	08
• Comparison Chart of Alcohol Concentration.....	09
Note 2.....	11
Warning.....	11

Statement

The testing results of this product is only for reference, and the manufacturer and seller are not responsible for any behaviors that break the law.

Note 1

1. This product is preset before, so you can use it directly. If you want to change the testing unit and temperature unit or change the alarm triggering value, you can refer to this user manual to do it .

Default Setting Unit: %BAC (America Unit)

Warning Value (A value to trigger warning alarm): 0.02%BAC

Danger Value (A value to trigger dangerous alarm): 0.05%BAC

Packing List



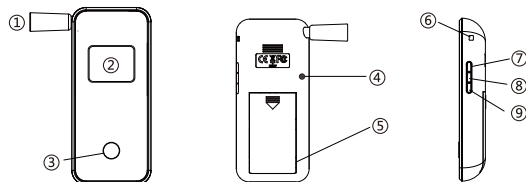
A: Alcohol breathalyzer x1

B: Mouthpieces x5

C: User manual x1

D: Cloth bag x1

Product Structure



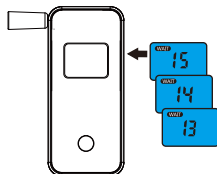
- ① Mouthpiece (replaceable)
- ② LCD screen
- ③ Power button
- ④ bottom case
- ⑤ Battery compartment
- ⑥ Vent hole
- ⑦ U (Unit) button
- ⑧ M (Memory) button
- ⑨ A (Alarm Value) button

Using Method

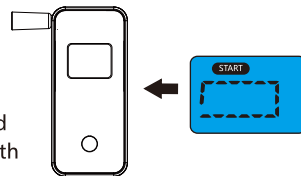
Alcohol Testing

1. Keep pressing power button for 2 seconds, the product will turn on after a “di” sound. The screen shows the current environment stemperture, and then press power button once to continue.

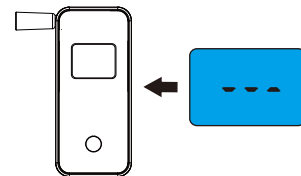
2. At this moment, the screen will show “WAIT” with 15 seconds countdown, which means the product is preheating. The preheating will be completed after the countdown ends.



3. After preheating, the screen will show “START” to prompt user to blow. Blow within 10s after the START prompt showed on screen (Blowing in one breath for 3~5s).



4. Wait for the product to analyse the testing result after blowing, and read the results from the LCD screen.



Result A: The screen’s background light will turn green if the testing value is lower than warning value, and the alarm will make a “di” sound to indicate safety.

Result B: The screen’s background light will turn yellow if the testing value is between the warning value and the dangerous value, and the alarm will make sound as “di di”.

Result C: The screen’s background light will turn red if the testing value is higher than dangerous value, and the alarm will make sound as “di di di...” for about 15 seconds.



Note:

In order to get the most accurate testing results, it's suggested to test 3 times and take the average value from 3 tests as a reference. Please note that the interval time of each test should be kept for 2~3 min, because the machine needs some time to volatilize the residual gas inside it, otherwise it will cause inaccurate testing readings.

Temperature Unit Setting

The screen will show temperature at first after the product is turned on. At this moment, press the U button to change the temperature unit (Fahrenheit and Celsius).

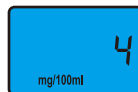
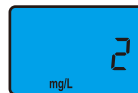


Testing Unit Setting

1. Keep pressing power button for 2 sec to power on. The screen shows the temperature of the current environment, and then press power button once to enter Wait Mode. The upper left of screen will show "WAIT" and will count down 15 seconds. During the 15s countdown, press U button to enter into the mode of testing unit setting.

2. In the mode of testing unit setting, press U button to turn page forward or A button to turn page backward, then select the unit you want (%BAC, ‰BAC, mg/L, g/L, mg/100ml, ‰PROM).

3. After selecting the given unit, press power button to complete the setting and exit from the mode.



Alarm Triggering Value (Warning/Dangerous Value) Setting

The users can customize the warning and dangerous value according to local standards of drunk driving.

1. Turn on the product, the screen shows the temperature of the current environment, and then press power button once to Wait Mode. The upper left of screen will show "WAIT" and will count down 15 seconds. During the 15s countdown, press A button to enter into setting mode of alarm triggering value (Default to enter into warning value setting first).

2. In the mode of warning value setting, press U button to increase warning value, press A button to decrease it, and press M button to change the mode of warning value setting and dangerous value setting.

3. In the mode of dangerous value setting, press U button to increase dangerous value and press A button to decrease it. Press power button to save the setting of triggering value and exit from the unit setting mode, and it will get back to alcohol testing mode automatically.



Default Value of Triggering Alarm

	BAC(Blood Alcohol Concentration)					BrAC(Breath Alcohol Concentration)
	%BAC	‰BAC	‰PROM	g/L	mg/100ml	mg/L
safe	0~0.02	0~0.2	0~0.2	0~0.2	0~20	0~0.1
warning	0.02~0.05	0.2~0.5	0.2~0.5	0.2~0.5	20~50	0.1~0.25
dangerous	0.05≤	0.5≤	0.5≤	0.5≤	50≤	0.25≤

Restart Mode

1. After you finish the first test and get the result, press power button to restart the breathalyzer. The product will enter into preheating state automatically after restart, and you can make next test after the preheating.
2. For more accurate testing readings, it's suggested to keep the interval time of each test for 2~3 min.

Memory Mode

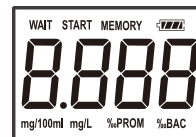
1. After power on, the screen will show "WAIT" and will count down 15 seconds. Press M button to enter into memory mode, in which the breathalyzer can show 32 testing records that tested before.
2. Press U button to check previous testing records forward.
3. Press A button to check previous testing records backward.
4. Press power button to exit from the memory mode.

Automatic Power Off

1. If there is no next operation 15 sec after the testing result shows on screen, the product will turn off automatically after the OFF icon flash 2 times on screen with 2 times alarming sound.
2. The product will turn off automatically if it fails in preheating step.
3. Keep pressing power button for 2 sec to power off.

Low Battery Indication

As shown in the figure, you can check the battery level through the battery mark in the upper right of the screen. If the battery indicator is flickering or the product can not be turned on, it means the battery is low and you need to replace the battery.



Specifications

Basic Specification

Battery	3×1.5V (AAA battery)
Blowing Time	3~5s
Display	LCD display with backlight
Working current	100~200mA
Quiescent current	≤ 40μA
Environmental temperature	0℃ ~ 45℃ (32°F~113°F)
Size	About 123mm*55mm*19mm
Weight	About 90g
Default warning value	0.02% BAC (adjustable)
Default dangerous alarm value	0.05% BAC (adjustable)

Testing Range

0~0.199%BAC (Deviation $\pm 0.01\%$ BAC)

0~1.999‰BAC (Deviation $\pm 0.1\%$ ‰BAC)

0~1.999g/L (Deviation ± 0.01 g/L)

0~0.999mg/L (Deviation ± 0.05 mg/L)

0~1999mg/100mL (Deviation ± 10 mg/100mL)

0~1.999‰PROM (Deviation $\pm 0.1\%$ ‰PROM)

Testing Unit Meaning

BAC: Blood Alcohol Concentration (The percent of alcohol in a person's blood stream)

%BAC --- How many grams of alcohol are present in 100ml of blood

‰BAC --- How many grams of alcohol are present in 1000ml of blood

g/L --- How many grams of alcohol are present in one litre of blood

mg/100ml --- How many milligrams of alcohol are present in 100ml of blood

BrAC: Breathe Alcohol Concentration (The percent of alcohol in a person's breath)

mg/l --- How many milligrams of alcohol are present in one litre of blood

Comparison Chart of Alcohol Concentration

%BAC-----USA

g/L-----European

mg/LBrAC-----Japan

mg/100ml-----China

‰BAC-----Russina

‰PROM-----Poland

Check this chart according to your testing results, so as to get the concentration units that conform to local standards.

BAC (Blood Alcohol Concentration)					BrAC (Breath Alcohol Concentration)	
%BAC	‰PROM	‰BAC	g/L	mg/100 ml	mg/L	ppm
0.01	0.1	0.1	0.1	10	0.05	25
0.02	0.2	0.2	0.2	20	0.10	50
0.03	0.3	0.3	0.3	30	0.15	75
0.04	0.4	0.4	0.4	40	0.20	100
0.05	0.5	0.5	0.5	50	0.25	125
0.06	0.6	0.6	0.6	60	0.30	150
0.07	0.7	0.7	0.7	70	0.35	175
0.08	0.8	0.8	0.8	80	0.40	200
0.09	0.9	0.9	0.9	90	0.45	225
0.10	1.0	1.0	1.0	100	0.50	250
0.11	1.1	1.1	1.1	110	0.55	275
0.12	1.2	1.2	1.2	120	0.60	300
0.13	1.3	1.3	1.3	130	0.65	325
0.14	1.4	1.4	1.4	140	0.70	350
0.15	1.5	1.5	1.5	150	0.75	375
0.16	1.6	1.6	1.6	160	0.80	400
0.17	1.7	1.7	1.7	170	0.85	425
0.18	1.8	1.8	1.8	180	0.90	450
0.19	1.9	1.9	1.9	190	0.95	475
0.20	2.0	2.0	2.0	200	1.00	500

Note 2

1. If the deviations of 2 successive readings are both larger than 0.01%BAC , 0.1‰BAC or 0.05mg/L, you need to test again.
2. Do not block the side air outlet when you're blowing.
3. There will be deviation between the testing value and true value if the product's battery is running low. It's suggested to use the product after replacing the battery.
4. The testing data can not be used as evidence in court.
5. Do not indulge in excessive drinking.

Warning

1. The applicable temperature to use the product is 0°C~45 °C (32°F~113°F).
2. For better performance and longer battery life, please avoid using the product at too high/low temperature or in static environment, such as in hot weather or a sun-baking car, beside the fire, on surface of any hot items, in cold environment, etc.
3. Do not clean the product with any chemical detergents.
4. Do not personally reconstruct, repair or disassemble the product to avoid damage.
7. Do not use this product to decide whether you can drive or do some dangerous things.

--	--